



GOOD MORNING  
Have Good Trading Day

MONDAY



Price is what you pay.  
Value is what you get.

- Warren Buffet



## MARKET PULSE

### INDIAN INDICES

NAME	CMP	NET CH.	%
SENSEX	24435	+473	+1.98
NIFTY	7422	+145	+2.00

### INDIAN ADR'S

SYMBOL	CLOSE	GAIN/ LOSS %
DRREDDY	42.53	+3.18
HDFCBANK	54.85	+1.03
ICICIBK	6.90	+1.92
INFY	17.90	+0.17
TATAMOTOR	25.12	+2.70
WIPRO	11.45	+1.24

### FII AND MF ACTIVITY

SYMBOL	In Crs.
FIIs Eq (Provisional)	-769.83
FIIs Index Future	556.61
FIIs Index Options	1025.62
FIIs Stock Future	859.34
FIIs Stock Options	-92.87
DII's Eq (Provisional)	915.60

### CURRENCY

RBI RATE	22-JAN-2016
RUPEE - \$	67.7480
EURO	73.4050
YEN 100	57.3800
GBP	96.4461

## MARKET PULSE

### GLOBAL INDICES

NAME	CMP	NET CH.	%
DOW	16093	+210	+1.33
NASDAQ	4591	+119	+2.66
NIKKEI	17194	+235	+1.39
HANG SENG	19435	+354	+1.85
SGX NIFTY	7458	+31	+0.42

### WORLD COMMODITIES

FUTURE	U\$\$	CHANGES
CRUDE	32.27	+0.08
NATURAL GAS	2.155	+0.014
GOLD	1100.4	+4.1
SILVER	14.105	+0.048
COPPER	1.9960	-0.0065

### WORLD EVENTS

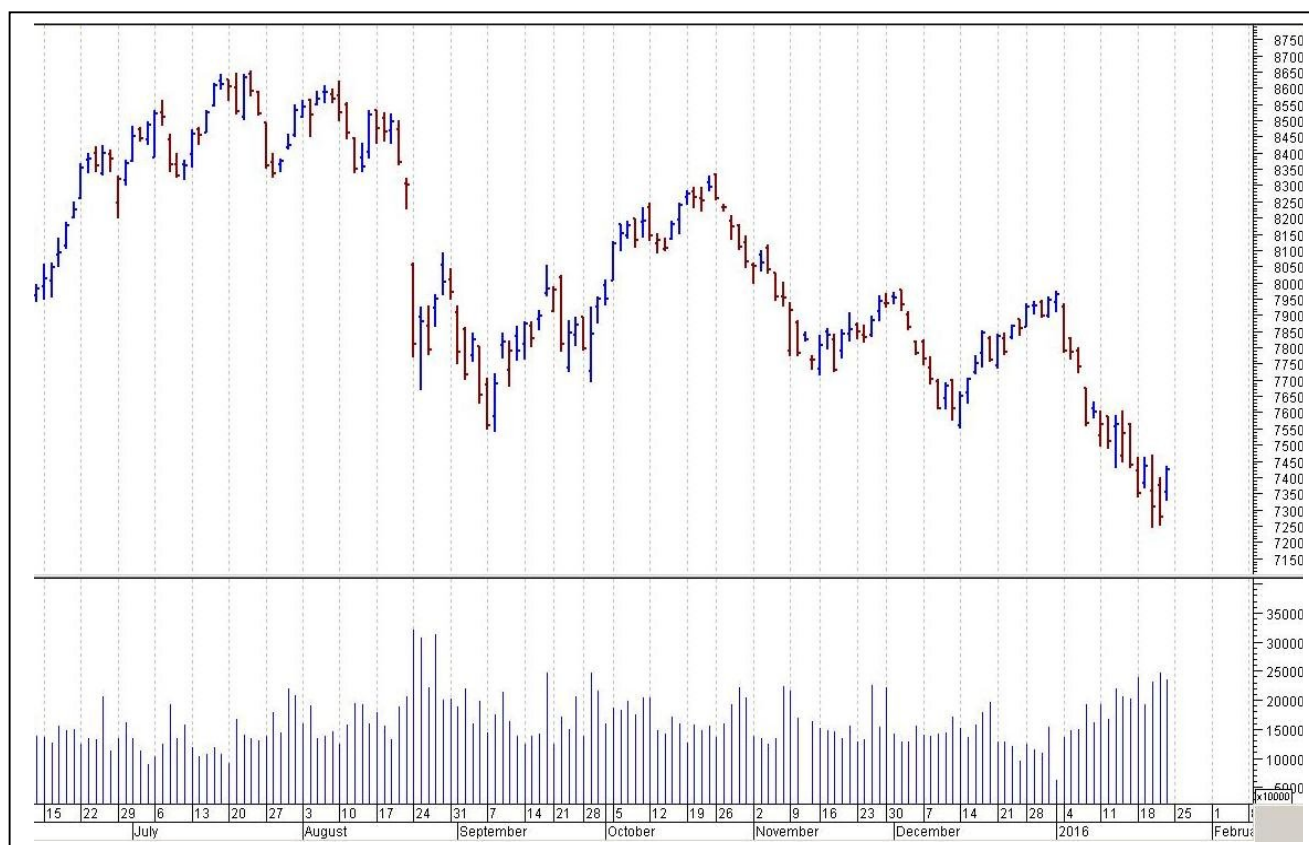
- US:NIL
- UK:CBI Industrial Order Expectations

## TOP STORY

- Cairn India Q3 Cons Net Profit At `8.7 Cr Vs `672.7 Cr (QoQ) Cons Total Income At `2,039.5 Cr Vs `2,242.1 Cr (QoQ)
- Hero Motocorp (ET) Consumer arm Hero FinCorp may sell up to 10% stake for over `800 cr
- Banks to get 2.5% commission on gold monetization scheme
- SBI looks top raise `6000 cr from bond deal with LIC: ET
- Cipla Completes Divestment Of Its Entire 25% Stake In Biomab Holding
- Tata Power Renewable Energy Arm Allots NCDs Worth `425 Cr On Private Placement Basis
- Persistent Systems Q3 Cons Net Profit At `77.4 Cr Vs `71.8 Cr (QoQ). Cons Total Income At `592 Cr Vs `542.7 Cr (QoQ)
- Rel Comm Q3 Cons Net Profit At `171 Cr Vs `156 Cr (QoQ). Cons Total Income At `5,277 Cr Vs `5,324 Cr (QoQ)



## NIFTY CHART



## MARKET COMMENTARY

The market staged spectacular performance on Friday with the equity benchmarks as well as broader indices rallying 2 percent each, tracking recovery in global peers (post ECB meet), rupee and oil prices. Most beaten down stocks like banks, auto, oil and infra saw short covering and value buying. The 30-share BSE Sensex climbed 473.45 points or 1.98 percent to 24,435.66 and the 50-share NSE Nifty rose 145.65 points or 2 percent to 7,422.45. The market breadth too was strong as more than three shares advanced for every share declining on the Bombay Stock Exchange. For today's trade Nifty likely to trade in the range between 7450-7580 in the upper side and 7400-7280 in the lower side.

### MARKET LEVELS

	CMP	SUPPORT LEVELS				RESISTANCE LEVELS			
NIFTY	7422	7400	7350	7310	7280	7450	7500	7540	7580
USDINR	67.63	67.50	67.42	67.35	67.25	67.70	67.82	67.90	68.00



### FUTURES CORNER

SCRIPS	CLOSE	SUPPORT	TARGET		REMARKS
		STOP LOSS	T1	T2	
PFC	159	157	162	165	TRADING CALL
PETRONET	252	250	255	258	TRADING CALL
ASHOKLEY	86.20	84.90	88	90	TRADING CALL

### EQUITY CORNER

SCRIPS	CLOSE	SUPPORT	TARGET		REMARKS
		STOP LOSS	T1	T2	
ALSTOM INDIA	641.50	634	650	662	TRADING CALL
LT	1145	1130	1160	1180	TRADING CALL

### DELIVERY BASED CALL / INVESTMENT CALL

SCRIPS	CMP	SUPPORT	TARGET		REMARK
		STOP LOSS	T1	T2	

### BULK DEALS (BSE)

SCRIP	CLIENT NAME	BUY/SELL	QUANTITY	PRICE
SCTL	ZAVERI & CO EXPORTS	B	68,000	62.9
INTELLCAP	SUNIL OPTICS PRIVATE LIMITED	S	146,650	53.93
EUROCERA	BANK OF INDIA PLEDGE SHARES	S	200,000	3.47

### BULK DEALS (NSE)

SCRIP	CLIENT NAME	BUY/SELL	QUANTITY	PRICE
OPAL	RBL BANK LIMITED	BUY	834000	95
OPAL	INNOVENTIVE VENTURE LIMITED	SELL	835000	95
WELINV	APMS INVESTMENT FUND LIMITED	SELL	73364	48.93

### SCRIP'S IN F&O BAN

(To resume for normal trading below 80% of market wide limit required)

DLF, JETAIRWAYS, JPASSOCIAT,RELINFRA,UNITECH



NIFTY 50 STOCKS: SUPPORT & RESISTANCE						
Symbol	Close	Support 1	Support 2	Pivot Point	Resistance1	Resistance2
ACC	1241	1228	1216	1243	1255	1269
ADANI PORTS	222	217	213	221	226	230
AMBUJACEM	193	191	189	194	196	199
ASIANPAINT	870	855	840	864	879	888
AXISBANK	424	417	409	422	430	435
BAJAJ-AUTO	2319	2286	2252	2307	2341	2363
BANKBARODA	130	127	124	129	132	135
BHARTIARTL	299	290	281	300	309	320
BHEL	147	145	142	146	149	151
BOSCH LTD	17304	17104	16904	17431	17630	17957
BPCL	883	874	864	881	890	898
CAIRN	113	111	109	113	115	117
CIPLA	582	577	572	583	588	594
COALINDIA	299	292	284	297	305	310
DRREDDY	2882	2804	2725	2858	2936	2991
GAIL	367	349	330	361	379	391
GRASIM	3447	3421	3395	3461	3487	3527
HCLTECH	839	830	822	841	850	860
HDFC	1158	1141	1124	1152	1169	1180
HDFCBANK	1030	1020	1010	1032	1042	1054
HEROMOTOCO	2592	2510	2428	2554	2636	2681
HINDALCO	72	70	68	71	74	75
HINDUNILVR	772	767	762	775	780	789
ICICIBANK	233	230	227	232	235	238
IDEA	107	103	99	109	113	120
INDUSINDBK	898	884	870	895	909	919
INFY	1136	1127	1118	1140	1149	1161
ITC	309	303	298	308	313	318
KOTAKBANK	683	669	654	679	693	704
LT	1142	1120	1098	1133	1155	1167
LUPIN	1721	1699	1677	1714	1736	1750
M&M	1199	1158	1117	1182	1222	1246
MARUTI	4105	3983	3862	4052	4173	4241
NTPC	138	135	132	137	140	142
ONGC	216	212	207	214	219	222
PNB	93	90	88	92	94	95
POWERGRID	133	132	130	134	135	137
RELIANCE	1004	995	986	1003	1012	1020
SBIN	185	180	176	183	187	190
SUNPHARMA	789	777	765	786	798	806
TATAMOTORS	340	332	325	339	346	353
TATAPOWER	62	61	61	62	62	63
TATASTEEL	248	240	232	245	253	259
TCS	2296	2270	2244	2286	2312	2328
TECHM	514	506	499	512	519	525
ULTRACEMCO	2713	2682	2651	2711	2742	2771
VEDL	65	63	61	65	67	68
WIPRO	550	546	542	551	555	560
YESBANK	684	667	651	678	695	706
ZEEL	395	389	383	395	401	407



## CORPORATE ACTION / BOARD MEETINGS

NSE Download Ref.No.:NSE/SURV/31599:- Max India Limited (MAX) will be available for trading in Trade for Trade segment (series: BE) with effect from January 27, 2016 (Wednesday)

NSE Download Ref.No.:NSE/CML/31617:- Change in Symbol and Name of the Company from Pantaloons Fashion & Retail Limited (PFRL) to Aditya Birla Fashion and Retail Limited (ABFRL) w.e.f. January 29, 2016

NSE Download Ref.No.: NSE/CML/31619:- Listing of Equity Shares of Oriental Carbon & Chemicals Limited (OCCL)(New Listing) w.e.f. January 27, 2016

### BOARD MEETINGS

COMPANY NAME	DATE	PURPOSE	RS. PER SH.
MINDTREE	25-Jan-16	Dividend	4
WIPRO	25-Jan-16	Dividend	5
MAX	27-Jan-16	Scheme Of Arrangement	
HCLTECH	27-Jan-16	Dividend	6
VETO	28-Jan-16	Dividend	0.5
MASTEK	28-Jan-16	Dividend	1.5
GANDHITUBE	28-Jan-16	Dividend	
ZENSARTECH	29-Jan-16	Dividend	5
SUPREMEIND	2-Feb-16	Dividend	
PERSISTENT	2-Feb-16	Dividend	
POWERGRID	3-Feb-16	Dividend	
GODREJCP	3-Feb-16	Dividend	
AEGISCHEM	4-Feb-16	Dividend	
BEL	4-Feb-16	Dividend	
TVSMOTOR	4-Feb-16	Dividend	
GAEL	5-Feb-16	Dividend	
NTPC	5-Feb-16	Dividend	
VRLLLOG	8-Feb-16	Dividend	
TCI	8-Feb-16	Dividend	
SHREECEM	10-Feb-16	Dividend	
SUNCLAYLTD	16-Feb-16	Dividend	
JMA	17-Feb-16	Dividend	

## NEWS & RUMOURS:

- Gold (Spot Dollar) major support = \$1069/\$1047 & Resistance = \$1125/\$1150.
- Crude oil range->\$27 to \$37.
- Global Stocks Charmed by Draghi Effect as Oil Rallies with Ruble: - Stocks rose around the world, extending Thursday's rebound from a 2 1/2-year low, on speculation that central banks will expand stimulus measures to counter turmoil in financial markets. Oil surged with emerging-market currencies, while haven assets retreated.
- Euro Drops with Yen on Increasing Bets for Central Bank Stimulus: -The euro and yen were set for their biggest weekly drops this year as traders braced for more stimulus measures after a global market rout strengthened the currencies.
- Saudi Arabia's Secret Holdings of U.S. Debt Are Suddenly a Big Deal: -It's a secret of the vast U.S. Treasury market, a holdover from an age of oil shortages and mighty petrodollars: Just how much of America's debt does Saudi Arabia own?.
- Draghi's Market Dialog Moves to Davos after ECB's Groundhog Day: - A day after kicking off yet another European Central Bank stimulus review, Mario Draghi used Davos as a platform to convince investors he'll do what's needed to reignite consumer prices.
- Oil Rises in Biggest Rally since August amid Volatility Surge: - Oil rallied in its biggest two-day advance since August after a slump to a 12-year low prompted some investors to buy back record bearish bets. Front-month futures have jumped more than 17 percent after sliding to the lowest since 2003 on Wednesday. Speculators earlier this month amassed the biggest ever short position in U.S. crude amid concern that turmoil in China's markets would curb fuel demand at a time when fresh exports from Iran exacerbate a global glut. Oil may be the "trade of the year," if it can weather the surge in the Middle East producer's shipments, according to Citigroup Inc.

## TRENDS & OUTLOOK – DATE: 25- Jan- 2016

### PRECIOUS METALS:

COMMDITY (MCX)	S2	S1	PIVOT POINT	R1	R2
GOLD (Feb)	25731	25966	26235	26470	26777
SILVER (Mar)	32100	33300	34555	35700	36500

### BASE METALS

COMMDITY (MCX)	S2	S1	PIVOT POINT	R1	R2
COPPER (Feb)	291	295	302	308	313
ZINC (Jan)	98.10	100.20	102.55	105.90	108.30
LEAD (Jan)	107.10	109.20	111.60	113.55	115.90
NICKEL (Jan)	556	570	588	606	625

### ENERGY

COMMDITY (MCX)	S2	S1	PIVOT POINT	R1	R2
CRUDE OIL (Feb)	1902	2001	2120	2255	2345
NATURAL GAS (Jan)	132	138	145	151	156

### DATE TALKS : TODAY'S ECONOMIC DATA :

German Ifo Business Climate, German Buba Monthly Report, Belgian NBB Business Climate, ECB President Draghi Speaks.



Registered Office

Indira House, 3rd Floor, 5 Topiwala Lane,  
Opp. Lemington Road Police Station, Grant Road (East), Mumbai - 400007.

Corporate Office

'Ramavat House' E-15, Saket Nagar, Indore - 452018 (M.P.)

Customer Care

Tel: +91-731-4097170/ 71/ 72/ 73/ 74 M. +91 93031 72345

Email: [customercare@indiratrade.com](mailto:customercare@indiratrade.com) [www.indiratrade.com](http://www.indiratrade.com)



INSTITUTIONAL DEALING UNIT

Africa House, 5, Topiwalla Lane, Lamington Road, Mumbai, 400007

Tel: +91 22 30080678 Fax : +91 22 23870767 Email : [ie@indiratrade.com](mailto:ie@indiratrade.com)

**Disclaimer**

This report is for private circulation within the Indira Group. This report is strictly confidential and for information of the selected recipient only and may not be altered in any way, transmitted to, copied or distributed, in part or in whole, to any other person or to the media or reproduced in any form. This report should not be construed as an offer or solicitation to buy or sell any securities or any interest in securities. It does not constitute a personal recommendation or take into account the particular investment objectives, financial situations, or any such factor. The information, opinions estimates and forecasts contained here have been obtained from, or are based upon, sources we believe to be reliable, but no representation of warranty, express or implied, is made by us to their accuracy or completeness. Opinions expressed are our current opinions as of the date appearing on this material only and are subject to change without notice.